



CHILTERNs

LANDSCAPE PARTNERSHIP



Build relationships, trust, confidence, capacity and a baseline

Increasing the number of hectares in active and positive management

Habitat conditions improve

Landscape-scale change and species recovery

Year 1 - 3



Year 3 - 5



Year 5



Year 10



Wildlife habitat improvement taking place here this winter

An exciting project is underway to create and restore wildlife habitats across the Chilterns. The Chilterns Conservation Board is working with farmers at a landscape scale to improve and connect wildlife habitats.

At Lacey's Farm hedgerow habitat is being increased and improved to encourage natural re-colonisation of rare birds, small mammals, invertebrates, reptiles and amphibians. Across the farm old hedgerows are being rejuvenated by cutting out overgrown and dead wood and planting new saplings in the gaps.

This hedgerow work is part of a plan to maximise valuable wildlife habitat across the whole farm.



For more information see www.chilternsaonb.org/projects/CCC



CHILTERN
CONSERVATION BOARD



HERITAGE
FUND

CHILTERN
LANDSCAPE PARTNER

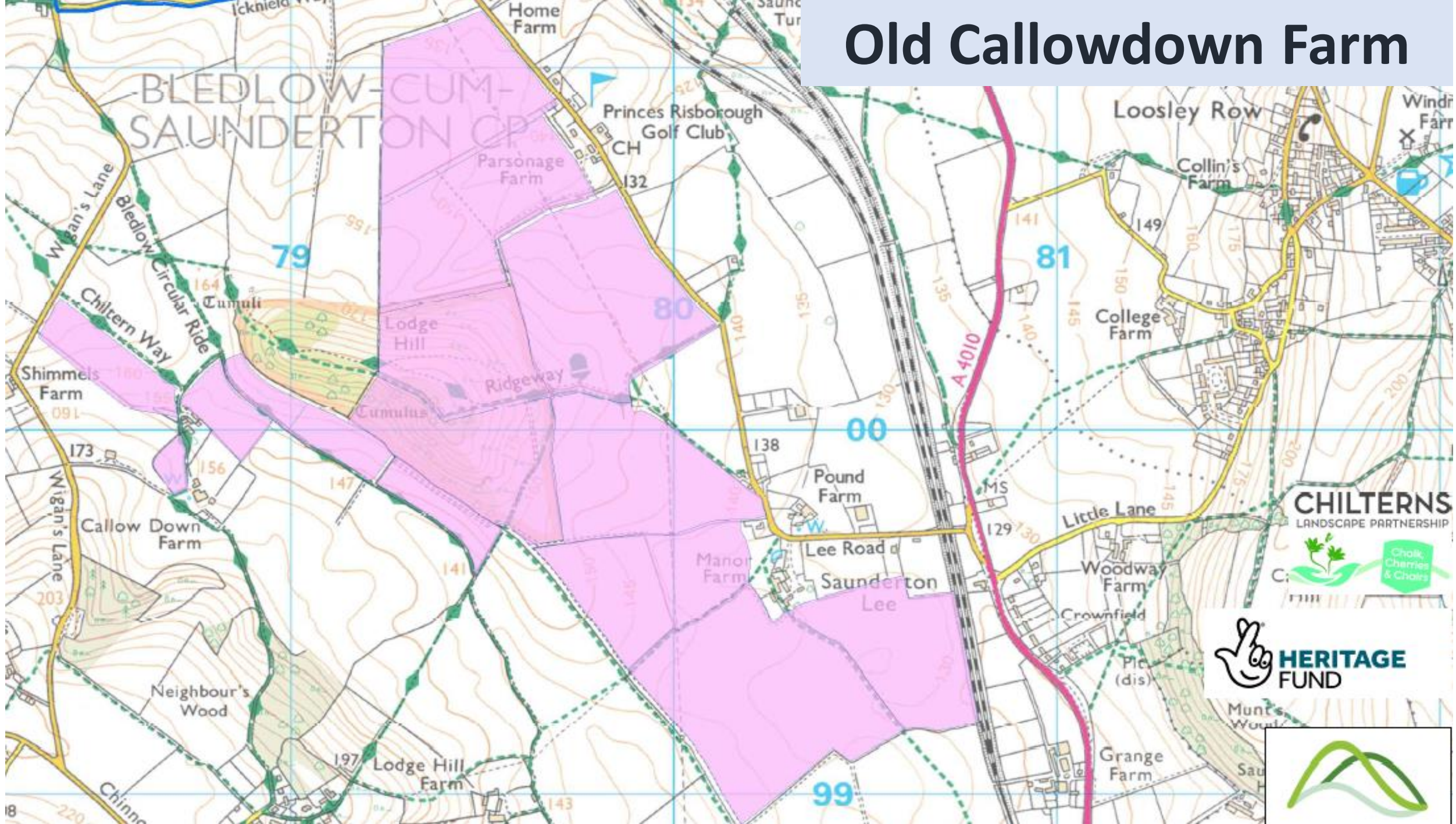


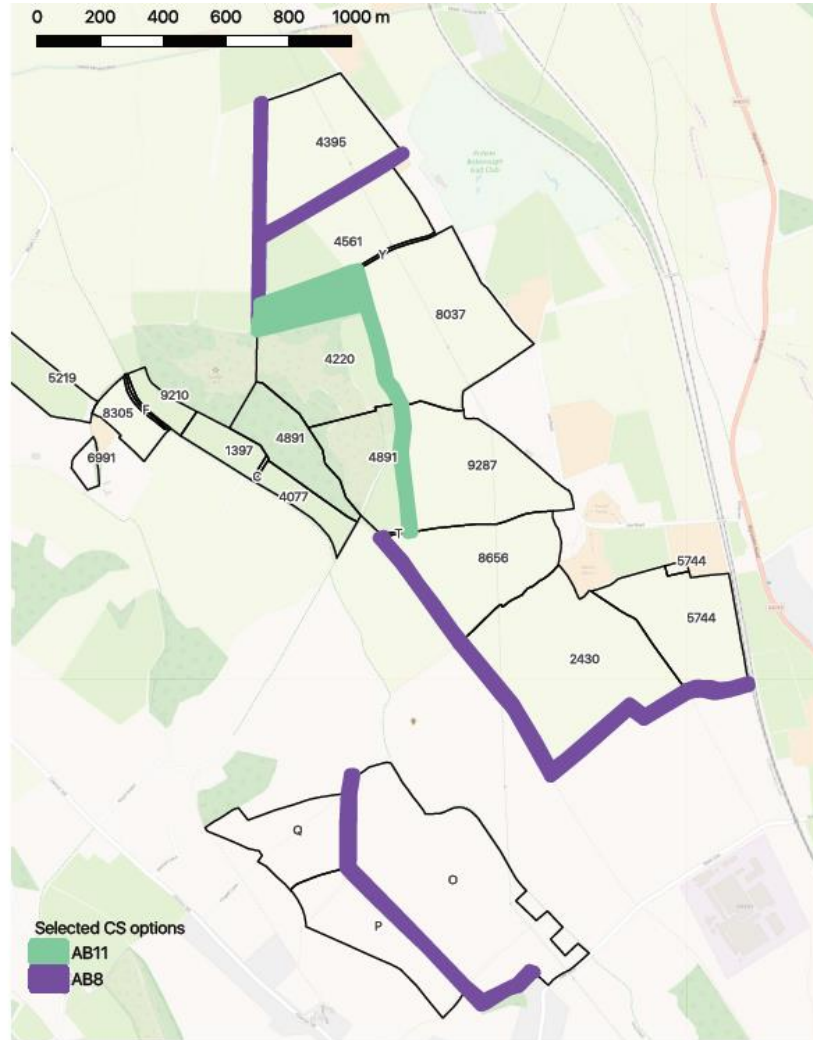
- Planting - 2,616m
- Coppicing - 690m
- Fencing - 2,360m
- £91,054 FiPL, NLHF, Farmer
- 5,620 kg CO₂





Old Callowdown Farm





sundew
ECOLOGY

Old Callowdown Farm
Map 8. Selected Countryside
Stewardship options

Base mapping © OpenStreetMap contributors



sundew
ECOLOGY

Conservation Management
and Ecological Consultancy

Old Callowdown Farm
Map 1: scrub to be cut and removed

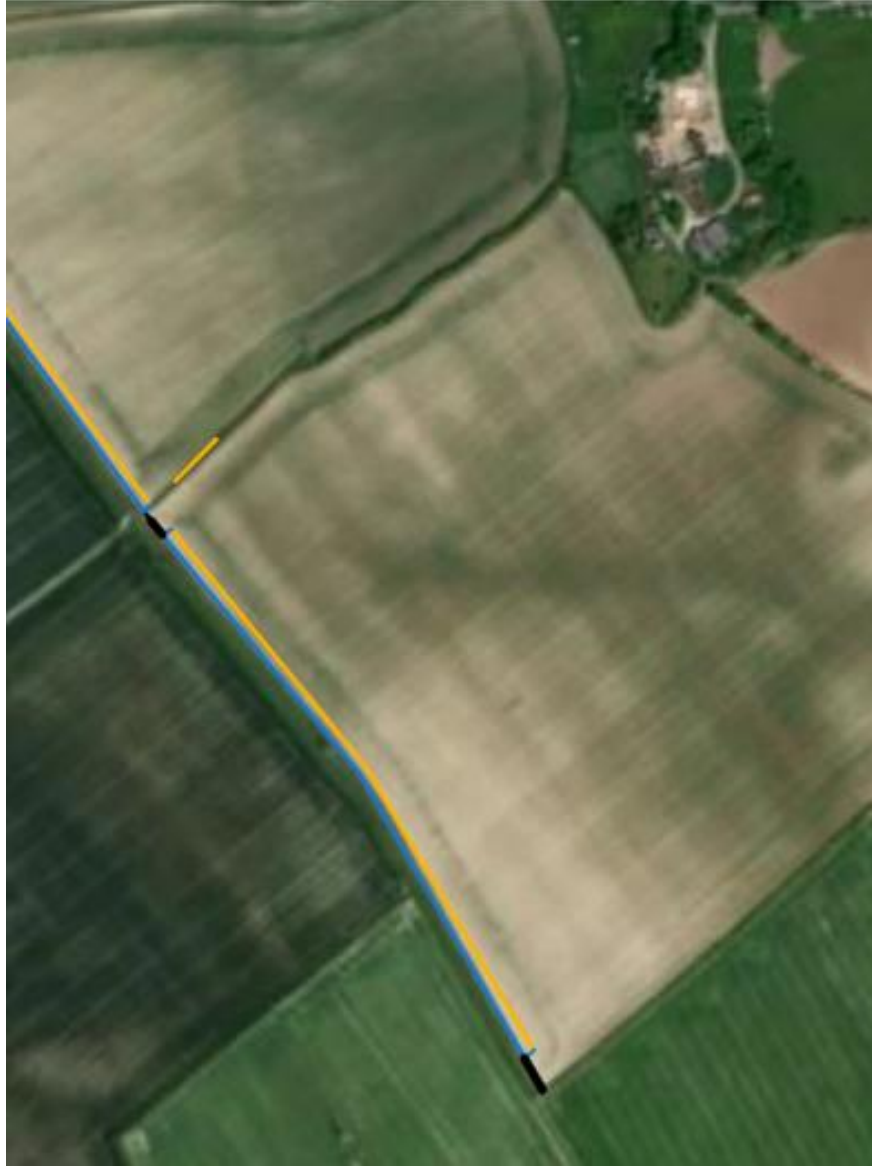
Base mapping © Google Maps















ROTHSCHILD
FOUNDATION



Farm Carbon Toolkit



Farm
Carbon
Toolkit

Farm Carbon Toolkit Soil sampling and carbon footprinting

Initial results and feedback session

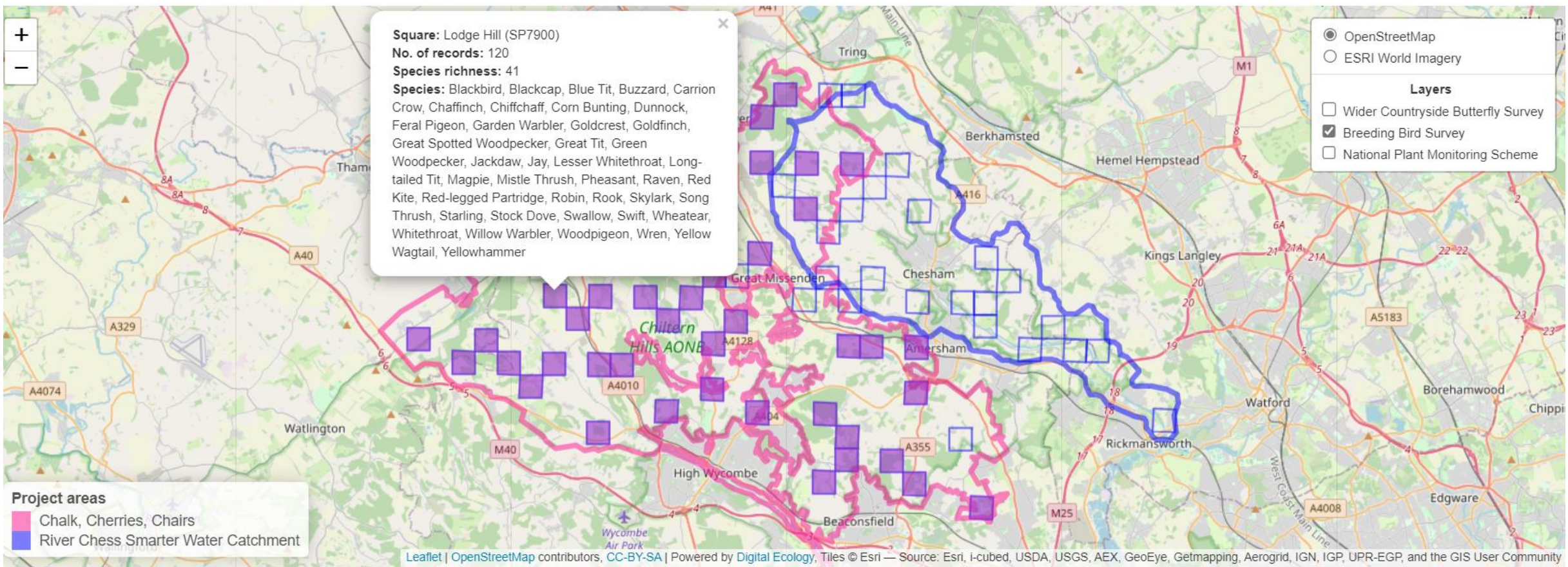
Becky Wilson
17th November 2021





ROTHSCHILD FOUNDATION

- **Advice** - paid for advice for arable & livestock farms on soil health projects
- **Consultancy** - support for applications SFI (e.g., soil health standard)
- **Baselines** - paid for soil sampling across whole farm/targeted fields
- **Trialling new techniques** - e.g., cover cropping, paid for contractor direct drilling
- **Shared projects** - e.g., sourcing grazing for cover crops
- **Training** - e.g., sourcing grazing for cover crops
- **Mentoring** - e.g., 1:1 peer support, Pasture for Life
- **Landscape scale** - planning, monitoring of impact across a wider scale









[Advanced company search](#)

CENTRAL CHILTERNNS FARMER CLUSTER CIC

Company number **15130165**

[Follow this company](#)

[File for this company](#)

[Overview](#)

[Filing history](#)

[People](#)

[More](#)

Registered office address

**Kensham Farm Cadmore Common, Cadmore End, High Wycombe,
England, HP14 3PR**

Company status

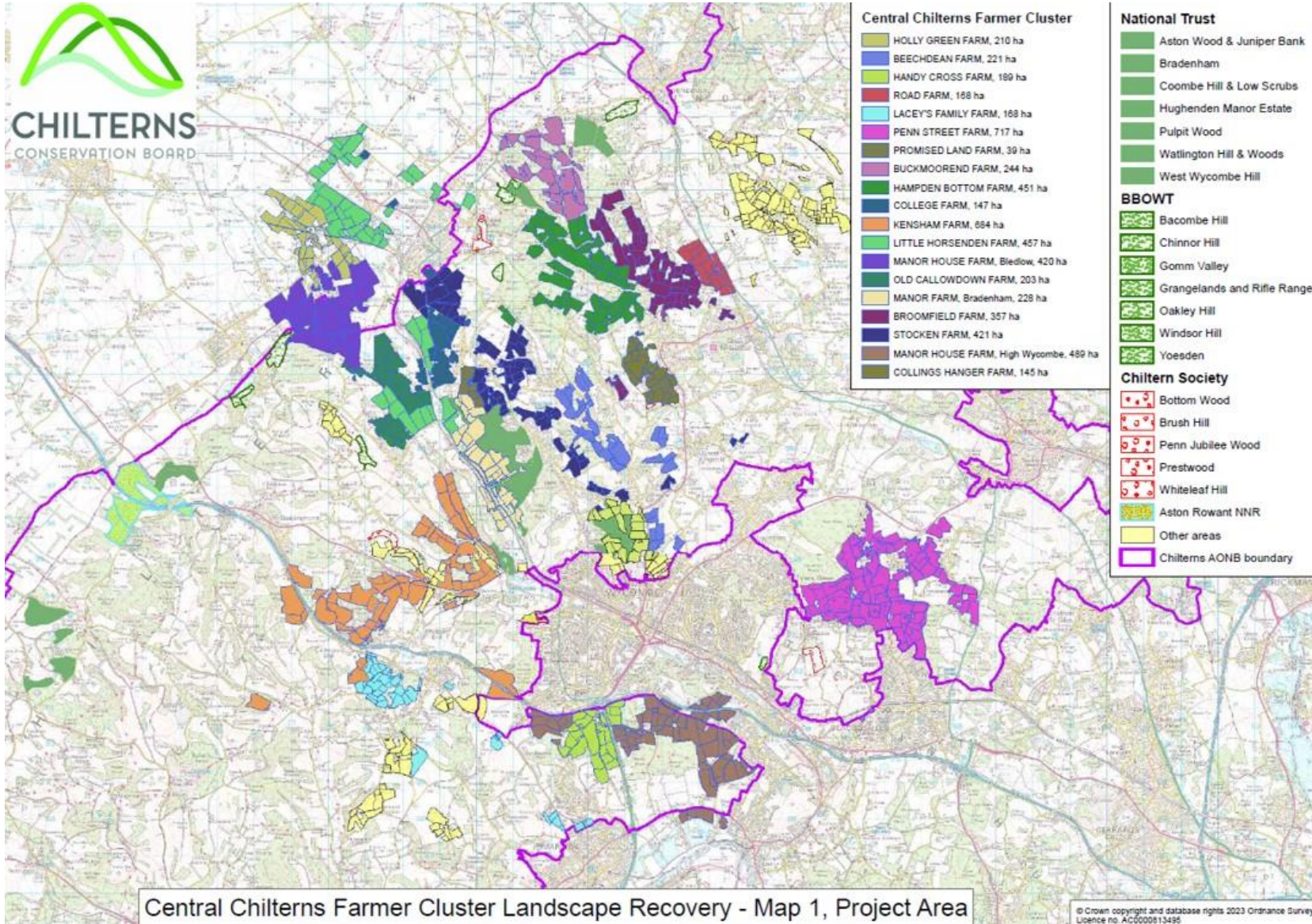
Active

Company type

Private company limited by guarantee without share capital
Community Interest Company (CIC)

Incorporated on

11 September 2023



Central Chilterns Farmer Cluster Landscape Recovery - Map 1, Project Area